

# MOUNT NEBO ROAD REMEDIATION SEGMENT 2A

## PROJECT UPDATE WEEK ENDING 3 August 2018

### Project Overview

Moreton Bay Regional Council is undertaking road construction works to improve a 350m section of Mount Nebo Road. Once complete, the project will provide improved traffic flow with enhanced safety for road users.

The works are being carried out by Hazell Bros.

### Works completed this week:

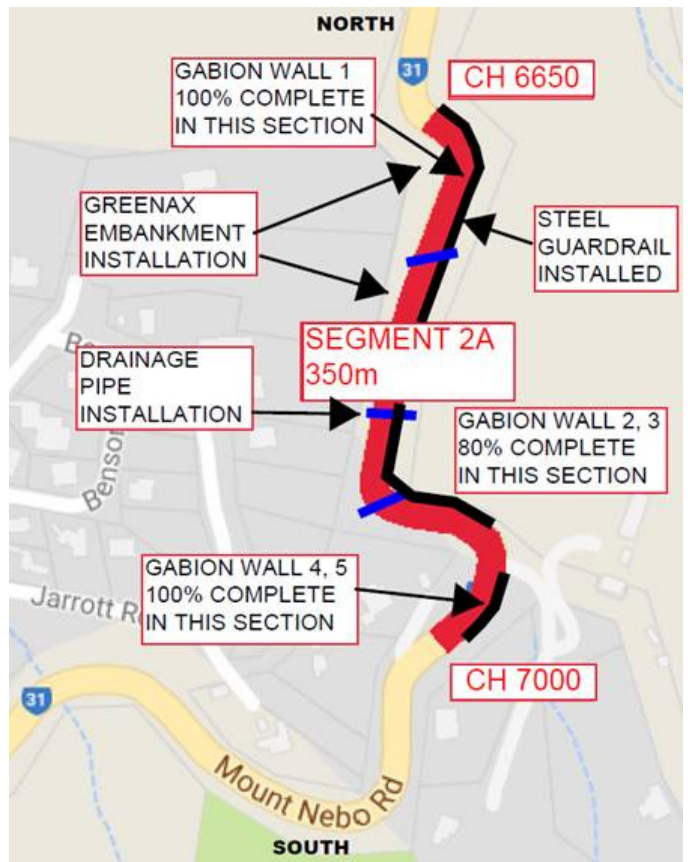
- Construction of Gabion Walls G2 and G3 continuing from Chainage 6880 to 6920.
- Installation of cross road drainage pipes
- Removal of vegetation and boulders from high side embankments
- Excavation for Gabion Wall G3 from Chainage 6920 continuing.
- Preparing roadbase level for low side lanes.

### Works planned for week commencing Monday 6 August 2018

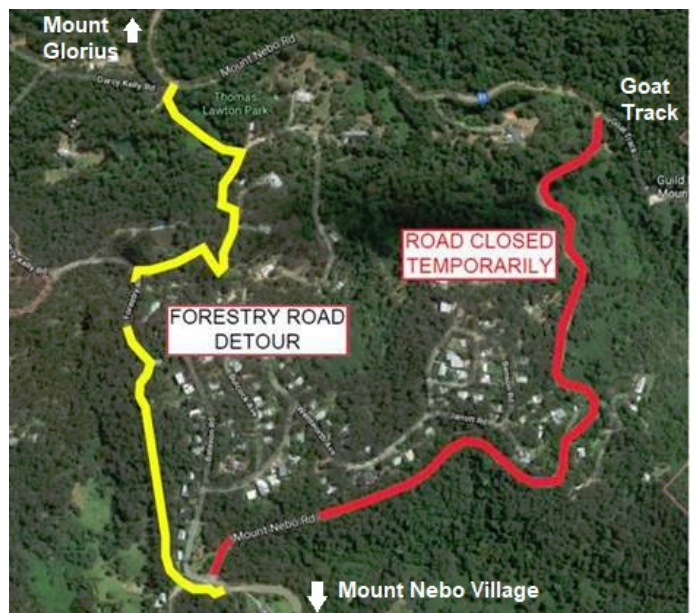
- Continuing Gabion Wall G2 and G3
- Installation of roadbase
- Installation of cross road drainage pipes
- Commence installation of Greenax embankment stabilisation.

### NOTE: Traffic restrictions continue on this section of Mount Nebo Road.

- **Road closure - 8am to 4.30pm on 6th, 7th, 8th, 9th and 10th August**  
- to allow installation of Greenax mesh to high side embankment and further drainage pipes
- **Road closure - 8am to 4.30pm 13th, 14th, 15th, 16th and 17th August**  
- to allow installation of Greenax mesh to high side embankment, profiling of the existing high side road and installation of new roadbase layers.
- Traffic control diversion in place via Forestry Road



### ROAD CLOSURE PHOTO MAP





Wall G2 looking south



Embankment to be stabilised with Greenax. Boulder removed from embankment. (looking south towards wall G2)